

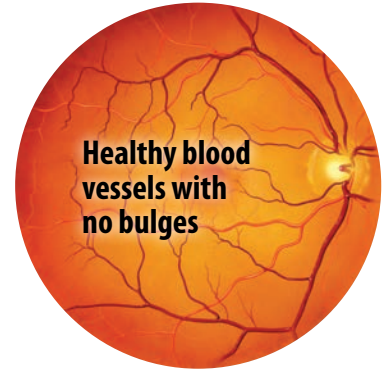
Take Action to Help Manage Your Diabetic Retinopathy



What is Diabetic Retinopathy?

- It is the most common eye problem caused by diabetes and can lead to significant vision loss
- It happens when too much blood sugar (glucose) damages the blood vessels in the retina

Tell your eye care specialist about any changes in your vision, such as blurriness or floating spots, and keep regular appointments with your doctor



Healthy retina

Diabetic Retinopathy Stage (Check one)

■ Mild



■ Moderate



■ Severe



■ Proliferative



Over time, Diabetic Retinopathy can get worse, and changes in vision may occur

These are illustrated images.

Treatment plan:

My next steps:

Other information:



SELECT IMPORTANT SAFETY INFORMATION

EYLEA is a prescription medicine administered by injection into the eye. You should not use EYLEA if you have an infection in or around the eye, eye pain or redness, or known allergies to any of the ingredients in EYLEA, including aflibercept.

Please see additional Important Safety Information on other side and accompanying full Prescribing Information.

Tips for Managing Your Diabetic Retinopathy

Visit [EYLEA.com](https://www.eylea.com) to learn more.

What you can do:

In addition to following your doctor's overall treatment plan,

- 1 Keep regular appointments with your eye care specialist
- 2 Follow your eye care specialist's recommendations
 - If your doctor recommends treatment, ask if EYLEA is right for you.
EYLEA is a prescription medicine that is injected into the eye for Diabetic Retinopathy
- 3 Monitor your vision and report any changes to your eye care specialist

IMPORTANT SAFETY INFORMATION AND INDICATIONS

- EYLEA is a prescription medicine administered by injection into the eye. You should not use EYLEA if you have an infection in or around the eye, eye pain or redness, or known allergies to any of the ingredients in EYLEA, including aflibercept.
- Injection into the eye with EYLEA can result in an infection in the eye and retinal detachment (separation of retina from back of the eye). Inflammation in the eye has been reported with the use of EYLEA.
- In some patients, injections with EYLEA may cause a temporary increase in eye pressure within 1 hour of the injection. Sustained increases in eye pressure have been reported with repeated injections, and your doctor may monitor this after each injection.
- There is a potential risk of serious and sometimes fatal side effects related to blood clots, leading to heart attack or stroke in patients receiving EYLEA.
- Serious side effects related to the injection procedure with EYLEA are rare but can occur including infection inside the eye and retinal detachment.

- The most common side effects reported in patients receiving EYLEA are increased redness in the eye, eye pain, cataract, vitreous (gel-like substance) detachment, vitreous floaters, moving spots in the field of vision, and increased pressure in the eye.
- It is important that you contact your doctor right away if you think you might be experiencing any side effects, including eye pain or redness, light sensitivity, or blurring of vision, after an injection.
- EYLEA is for prescription use only. For additional safety information, please talk to your doctor and see the full Prescribing Information for EYLEA.

You are encouraged to report negative side effects of prescription drugs to the FDA. Visit www.fda.gov/medwatch, or call 1-800-FDA-1088.

INDICATIONS

EYLEA[®] (aflibercept) Injection 2 mg (0.05 mL) is a prescription medicine approved for the treatment of patients with Wet Age-related Macular Degeneration (AMD), Macular Edema following Retinal Vein Occlusion (RVO), Diabetic Macular Edema (DME), and Diabetic Retinopathy (DR).

Please see accompanying full [Prescribing Information](#).

EYLEA is a registered trademark of Regeneron Pharmaceuticals, Inc.

REGENERON